



**DAWN  
SANDOVAL**  
*Residential*

2 Bedrooms

Apartment

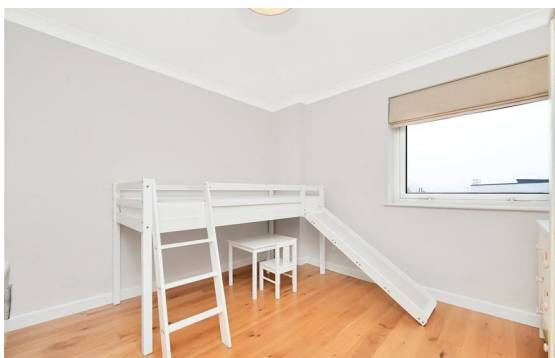
Located in London

£2,650 PCM



[info@dawnsandovalresidential.co.uk](mailto:info@dawnsandovalresidential.co.uk) [www.dawnsandovalresidential.co.uk](http://www.dawnsandovalresidential.co.uk)

0207 093 1702



**DAWN  
SANDOVAL**  
*Residential*

5 Indescon Square  
Lightermans Road  
London  
E14 9DQ

0207 093 1702

[info@dawnsandovalresidential.](mailto:info@dawnsandovalresidential.)

[www.dawnsandovalresidential.co.uk](http://www.dawnsandovalresidential.co.uk)

We are delighted to offer for rent this beautifully present part furnished two bedroom two bathroom apartment offering direct views of the River Thames.

### Energy Efficiency Rating: C

Agents Note: Whilst every care has been taken to prepare these particulars, they are for guidance purposes only. All measurements are approximate and are for general guidance purposes only and whilst every care has been taken to ensure their accuracy, they should not be relied upon and potential buyers/tenants are advised to recheck the measurements.